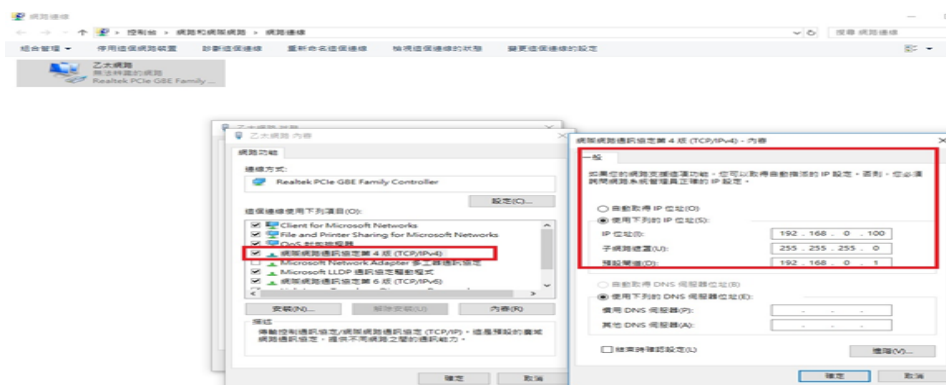


# OPF-4100E

## 簡易設定手冊

Before connecting OPF-4100E and revise the IP, please make sure your PC or terminal has changed the IP to the same network segment, 192.168.0.x, then follow the next steps to configure OPF-4100E.

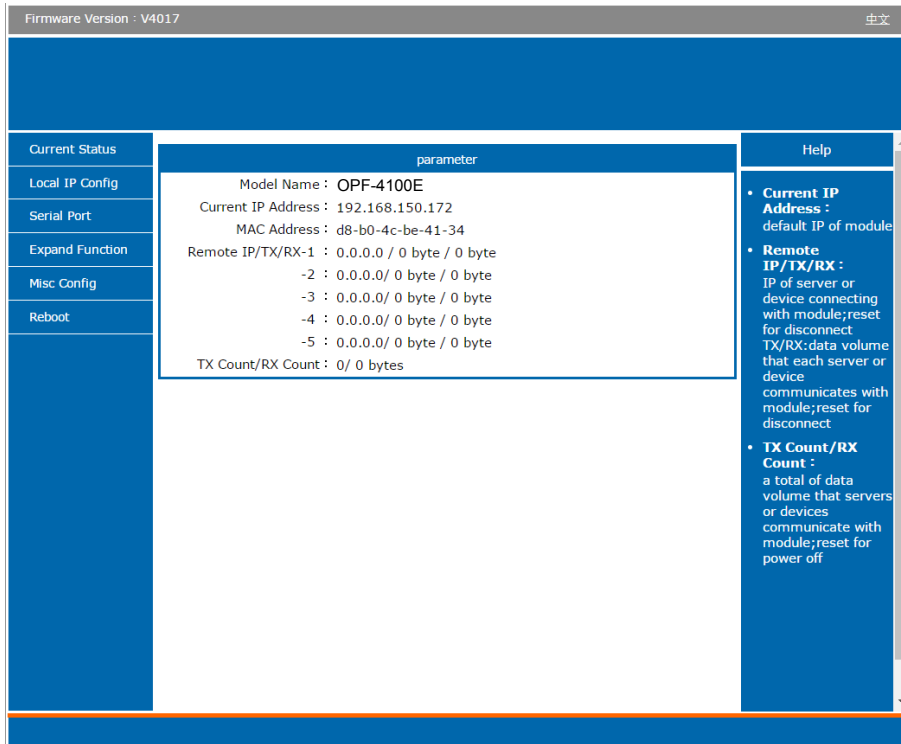


- 1 · Power requirement : DC 5~6V
- 2 · Default IP : 192.168.0.7, please use web browser to entry setting page.

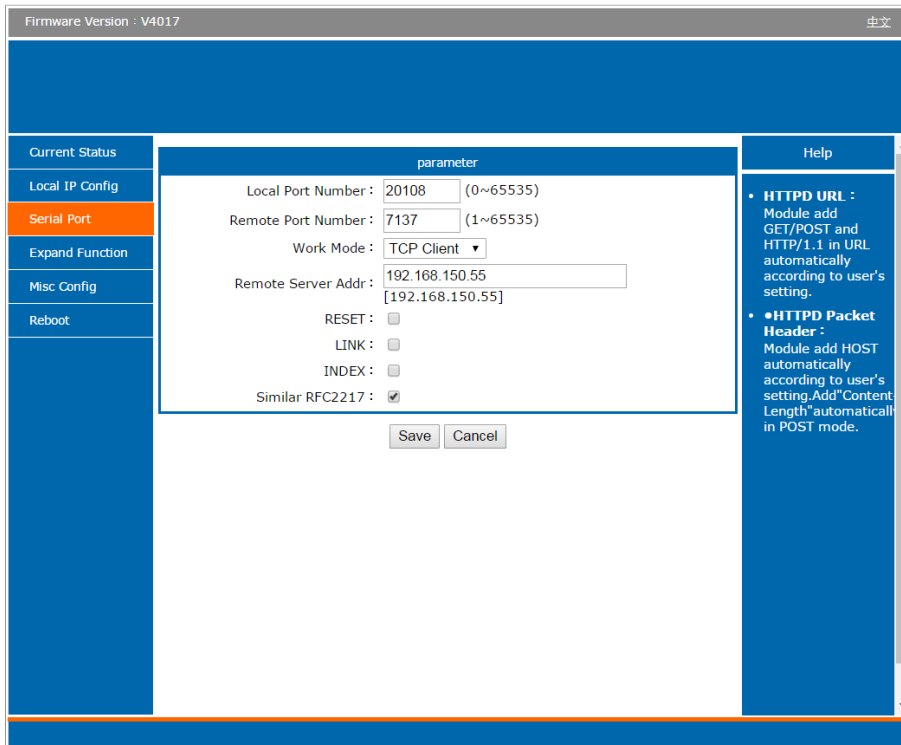


3 · User : admin

Password : admin



4. Default work mode : TCP Client (OPF-4100E as a client)  
 Default OPF-4100E port : 20108



5 · D-SUB Pin define :

Pin No.	Description	Pin No.	Description	Pin No.	Description
1	Trigger	4	Good Read Signal	7	None
2	Gnd	5	Gnd	8	Restart
3	Gnd	6	+V	9	Reserve to Factory Default