



More Precision

thermoMETER // Non-contact infrared temperature sensors





thermoMETER CSmicro 2W

Miniature OEM two-wire IR temperature sensor with controller integrated in the cable

- Measuring range from -40 °C to 1600 °C
- Applicable in ambient temperatures up to 180 °C without cooling (sensor)
- Robust, silicon-coated lens
- Integrated controller with LED alarm display and intelligent sighting aid, alarm signal, temperature-code display or self-diagnostics
- Integrated controller in the cable
- Scalable analog output and simultaneous alarm output
- Protection against short circuit and polarity change
- Programmable controller
- Optional USB interface and software for programming
- Best price - ideal for OEM applications

Optical specifications thermoMETER CSmicro 2W

□ = smallest spot size / focal point (mm)

Standard Focus										
SF15	15:1	6.5	11.6	16.6	21.7	26.7	35	43.3	51.6	59.9
SF22	22:1	6.5	10.5	14.4	18.4	22.3	26.3	30.2	34.2	38.1
	distance in mm	0	100	200	300	400	500	600	700	800
SF40	40:1	6.5	10.7	14.9	19.1	23.3	27.4	31.6	35.8	40
SF75	75:1	6.5	8.1	9.7	11.3	12.8	14.4	16	19.8	23.5
	distance in mm	0	200	400	600	800	1000	1200	1400	1600
Close Focus (with optionally available CF lens)										
CF15	15:1	7	3.9	0.8	4.7	8.6	12.5	16.4	20.3	24.2
CF22	22:1	7	3.8	0.6	4.4	8.2	12	15.8	19.6	23.4
	distance in mm	0	5	10	15	20	25	30	35	40
Close Focus (integrated CF lens in the sensor head)										
CF40	40:1	6.5	4.4	2.7	6	10.2	14.4	18.6	22.8	27
CF75	75:1	6.5	3.8	1.5	4.4	8	11.7	15.3	19	22.6
	distance in mm	0	60	110	150	200	250	300	350	400

Model	CSmi2W-SF15-C1	CSmi2W-SF15H-C1	CSmi2W-SF22H-C1	CSmi2WM-2SF40-C1	CSmi2WM-2SF75-C1
Optical resolution	15:1		22:1	40:1	75:1
Temperature range	-40 °C to 1030 °C ¹⁾			250 °C to 800 °C ¹⁾	385 °C to 1600 °C ¹⁾
Spectral range	8 to 14 μm			1.6 μm	
System accuracy	±1.0 % or ±1.0 °C ³⁾			±(0.3 % of reading +2 °C) ⁴⁾	
Repeatability	±0.5 % or ±0.5 °C ³⁾			±(0.1 % of reading +1 °C) ⁴⁾	
Temperature coefficient	±0.05 °C/°C or ±0.05 % °C ⁵⁾				
Temperature resolution	0.1 °C ⁶⁾				
Response time (90 %)	30 ms	150 ms		10 ms	
Emissivity/Gain	0.100 to 1.100 ²⁾				
Transmissivity/gain ¹⁾	0.100 to 1.100				
Signal processing ¹⁾	peak hold, valley hold, average; extended hold function with threshold and hysteresis				
Dimensions of controller	length 35 mm; ø12 mm				
Outputs/analog	4 to 20 mA				
Max. loop resistance	1000 Ω ⁷⁾				
Outputs/alarm	0-30 V / 500 mA (open collector)				
Outputs/digital (optional)	mono-/bidirectional, 9.6 kBaud, 0/3 V level, alternative USB				
Inputs	programmable functional input for triggered signal output or peak hold function				
LED functions	alarm display, automatic aiming aid, self-diagnostics, temperature display (via temp. code)				
Cable length	1 m (standard length); 0.5 m between sensor and controller; 0.4 m between controller and terminal device				
Power supply	4...20 mA (5 to 30 VDC)				
Protection class	IP65 (NEMA-4) sensor head				
Ambient temperature	sensor: -20 °C to 120 °C controller: -20 °C to 75 °C	sensor: -20 °C to 180 °C controller: -20 °C to 75 °C		sensor: -20 °C to 125 °C controller: -20 °C to 75 °C	
Storage temperature	-40 °C to 85 °C (sensor and controller)				
Relative humidity	10 to 95 %, non-condensing				
Vibration	IEC 68-2-6: 3 G, 11 to 200 Hz, any axis				
Shock	IEC 68-2-27: 50 G, 11 ms, any axis				
Weight	42 g				

¹⁾ adjustable via software

²⁾ adjustable via 0 to 5 VDC input or software

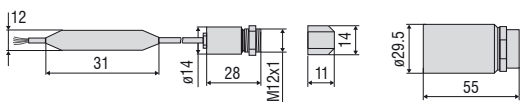
³⁾ ambient temperature 23 ±5 °C; whichever is greater; object temperature ≥ 0 °C

⁴⁾ ε = 1, response time 1 s, object temperature > 450 °C

⁵⁾ with object temperature < 100 °C; time constant from > 0.2 s

⁶⁾ with object temperature > 20 °C; time constant from > 0.2 s

⁷⁾ depends on supply voltage



Product identification

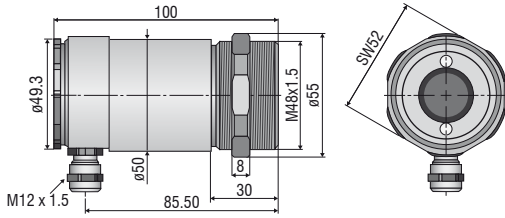
CSmi2W -	SF15-	C1
Cable length [1m (standard) / 3m / 8m / 15m]		
Focus [SF / CF]		
thermoMETER CSmi2W (TwoWire)		

Accessories page 54 - 55

- Ancillary CF lens
- Protective window
- Mounting bracket / mounting bolt
- Air purge collar
- Right angle mirror
- USB kit

CSLaser

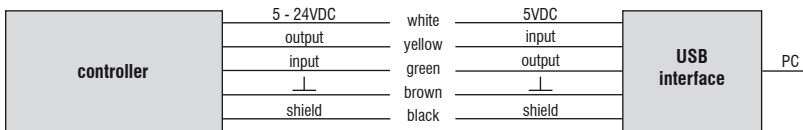
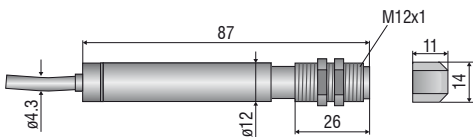
sensor



CS

sensor with integrated controller

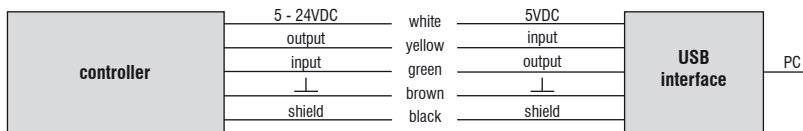
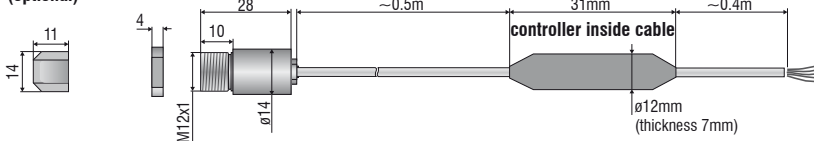
ancillary CF lens (optional)



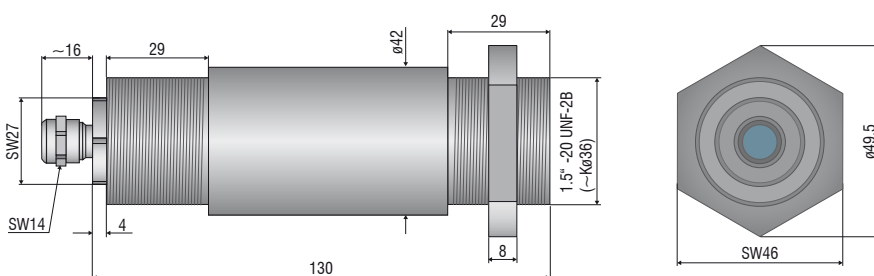
CSmicro / CSmicro 2W

ancillary CF lens (optional)

sensor



CX





Mechanical accessories CS / CSmicro / CSmicro 2W

Art. No.	Model	Description
2970279	Emissivity	Mounting bracket, fixed
2970280	TM-AB-CS	Mounting bracket, adjustable
2970281	TM-MB-CS	Mounting bolts with M12x1 thread
2970282	TM-MG-CS	Mounting fork, adjustable in 2 axes, with M12x1 fastening
2970283	TM-AP-CS	Air purge collar for 10:1 sensors
2970284	TM-APL-CS	Air purge collar, laminar
2970285	TM-APLCF-CS	Air purge collar, laminar with integrated ancillary CF lens
2970286	TM-RAM-CS	Right angle mirror for measurements 90 °C to the sensor axis
2970287	TM-USBK-CS	USB kit: USB programming adapter, CompactConnect software

Optical accessories CS / CSmicro / CSmicro 2W

2970277	TM-CF-CS	Ancillary CF lens for CS models
2970278	Aluminum	Protective window for CS models

Calibration CS / CSmicro / CSmicro 2W

2970288	TM-CERT-CS	Certificate of calibration
---------	------------	----------------------------

Mechanical accessories CX

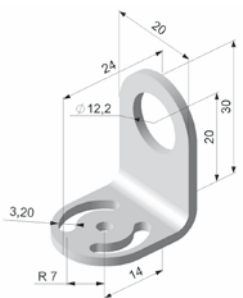
Art. No.	Model	Description
2970307	TM-AP-CX	Air purge collar, aluminum (anodized)
2970321	TM-FB-CX	Mounting bracket, adjustable in 1 axis, stainless steel
2970322	TM-AB-CX	Mounting bracket, adjustable, in 2 axes, stainless steel
2970311	TM-USBK-CX	USB kit: USB programming adapter, CompactConnect software

Optical accessories CX

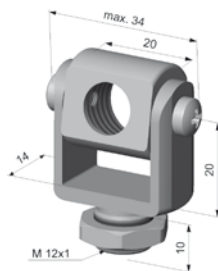
2970302	TM-CF-CX	Ancillary CF lens for CX models
2970303	TM-PW-CX	Protective window for CX models

Calibration CX

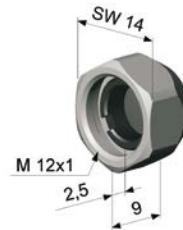
2970323	TM-CERT-CX	Certificate of calibration
---------	------------	----------------------------



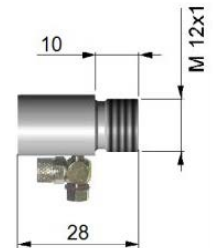
TM-FB-CS mounting bracket, fixed



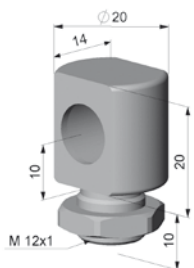
TM-MG-CS Mounting fork with M12x1 thread, adjustable in two axes



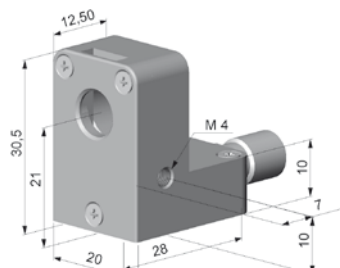
TM-CF-CS Ancillary CF lens (only for LT models)



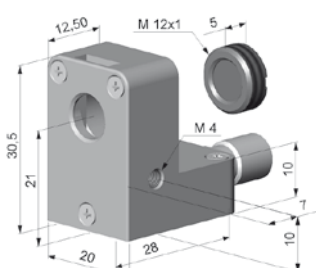
TM-AP-CS Air purge collar for 10:1 sensors



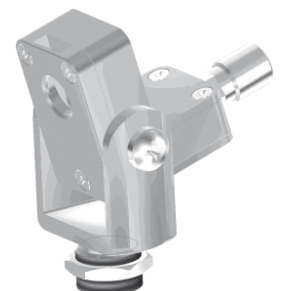
TM-MB-CS Mounting bolts with M12x1 thread adjustable in one axis



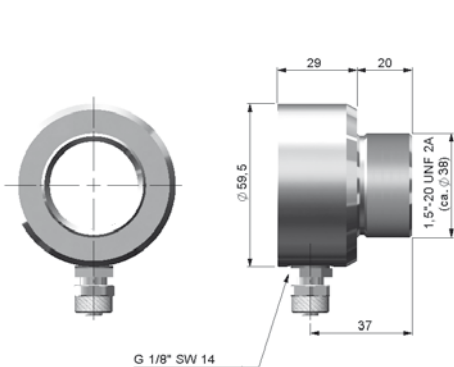
TM-APL-CS Air purge collar, laminar



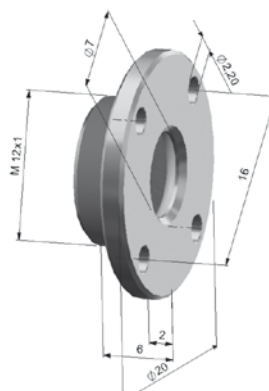
TM-APLCF-CS Air purge collar, laminar with integrated ancillary CF lens



TM-APL-CS Air purge collar, laminar
TM-MG-CS Mounting fork



TM-AP-CX Air purge collar for CX sensors



TM-CF-CX Ancillary CF lens, TM-PW-CX Protective window



TM-RAM-CS Right angle mirror

Further IR temperature measurement devices from Micro-Epsilon



thermoIMAGER TIM
Compact USB thermal imaging cameras
for precise thermography



thermoMETER CTVideo/CSVideo
Infrared temperature sensors with crosshair
laser sighting and video output



thermoMETER Handheld
Innovative handheld pyrometer with laser
sighting for inspection and maintenance