

Z3 SERIES

- Z3T-2500 □□
- Z3R- 400 □□
- Z3D- 100 □□
- Z3R- Q200 □□
- Z3D- L09 □□

INSTRUCTION MANUAL

- Please confirm if specifications fulfill your needs.
- Please read this manual carefully before the use and keep this for future reference.

Safety Precautions



- It is dangerous to wire or attach/remove the connector with the power on. Make sure to turn off the power before operation.
- Make sure to use the product with the protective cover attached and closed.
- Installing in the following places may result in malfunction:
 1. A dusty or steamy place
 2. A place generating corrosive gas
 3. A place directly receiving scattering water or oil.
 4. A place suffered from heavy vibration or impact.
- The product is not designed for outdoor use.
- Do not use the sensor in transient state after power on (approx. 100 ms).
- Do not wire with the high voltage cable or the power line. Failure to do this will cause malfunction by induction or damage.
- The sensor performance or digital display values may depend on the individual units or the condition of detected product.
- This product is not an explosion-proof construction. Do not use the product under flammable, explosive gas or liquid environment.
- Do not use the product in water.
- Do not disassemble, repair, or convert the product. Failure to do this may cause failure, fire, or electric shock.
- Operate within the rated range.

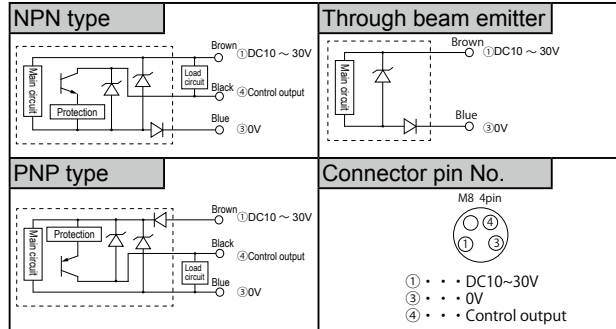
This product cannot be used as a safety device to protect human body.

SPECIFICATION

	Through	Retro ref.	Diffused ref.	Transparent objects	Limited range
Cable type	Z3T-2500(N/P)	Z3R-400(N/P)	Z3D-100(N/P)	Z3R-Q200(N/P)	Z3D-L09(N/P)
Connector type	Z3T-2500C(N4/P4)	Z3R-400C(N4/P4)	Z3D-100C(N4/P4)	Z3R-Q200C(N4/P4)	Z3D-L09C(N4/P4)
Nominal distance ^{*1}	25m	0.01~4m	0~1m	0.01~2m	10~90mm
Light Source	Red LED				
Spot size	φ 1800mm /25 m	φ 280mm /4 m	φ 75mm /1200mm	φ 140mm /2 m	φ 8mm /90mm
Supply voltage	DC10 ~ 30V Including ripple (P-P) 10%				
Current consumption	Sender : 20mA max Receiver : 15mA max.	20mA max	25mA max	20mA max	
Response time	500μs max				
Control output	NPN/PNP Open collector 100mA max. / DC30V max. (Residual voltage 1.8V max.)				
Operation mode	Light ON, Dark ON Selectable by switch				
Sensitivity adjustment	1 turn volume				
Indicator	Output indicator (orange LED) / Stable indicator (green LED)				
Ambient temp. / humidity	-25 ~ 55°C /35 ~ 85%RH (No condensation or freezing)				
Storage temp. / humidity	-40 ~ 70°C /35 ~ 95%RH (No condensation or freezing)				
Protection category/material	IP67 / Case : ABS , Front Cover : PMMA				

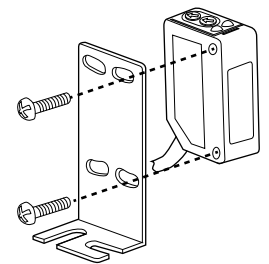
- *1 Sensing distance showed in above table is typical value in each type.
- Retro ref./Transparent objects types : Reflector V-61(option)
 - Diffused ref. type : White plate 200x200mm
 - Limited range type : White plate 100x100mm

INPUT AND OUTPUT CIRCUIT DIAGRAM



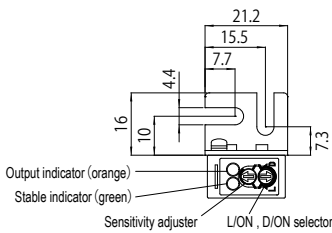
Attachment

- Tightening torque need to be under 0.5N·m.
- Use M3 screw to mount.



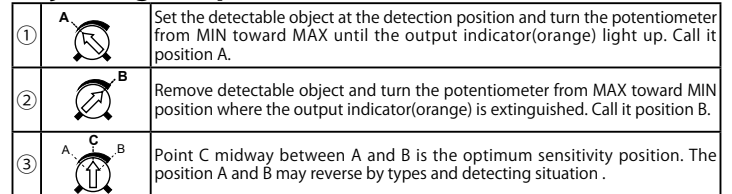
DIMENSIONS

Brackets for installation are optional and not included in this kit. (Not standard accessory and please purchase if needed.)



Output indicator (orange)
Stable indicator (green)
Sensitivity adjuster
L/ON, D/ON selector

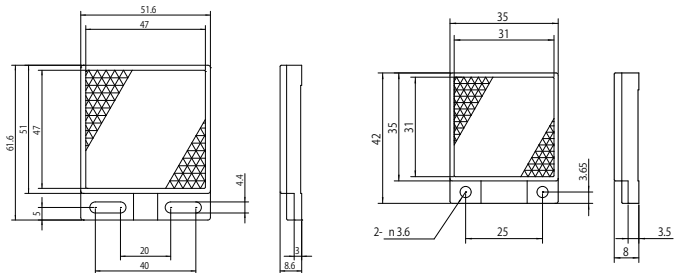
Adjusting the potentiometer



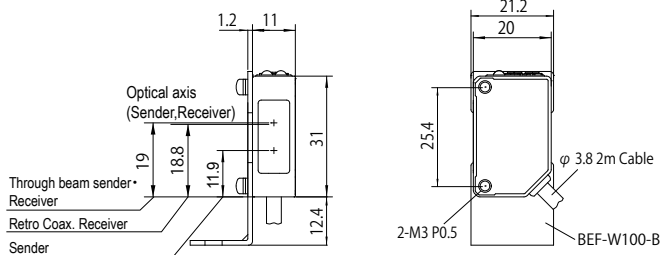
Reflectors (option)

For Retro Reflective use only
Please confirm appropriate type considering sensing distance and conditions to use. Reflectors are optional and not included in this kit. (Not standard accessory and please purchase if needed.)

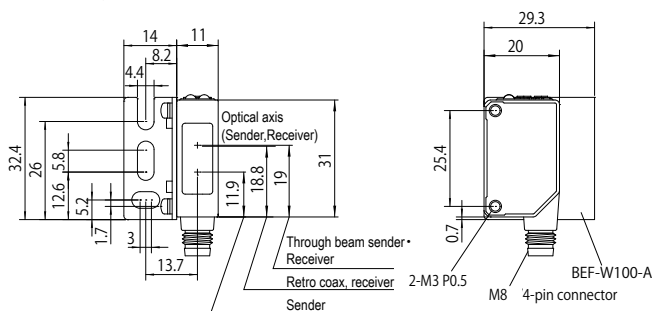
- Standard Type Type : V-61 Sensing distance : 0.01~4m(Retro Reflective Type)
- Small reflector Type : V-42 Sensing distance : 0.01~2.4m(Retro Reflective Type)



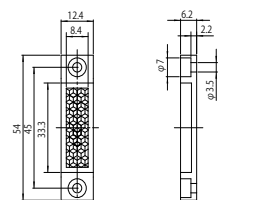
Cable type : When using brackets of BEF-W100-B (option)



Connector type : When using brackets of BEF-W100-A (option)



- Small reflector Type : P-45A Sensing distance : 0.01~1.4m(Retro Reflective Type)



Manufactured and sold by :

OPTEX FA CO.,LTD.

600-8815 Kyoto, Shimogyo, Awata Chudoji 91, Japan
TEL : +81-(0)75-325-2920
FAX : +81-(0)75-325-2921
Website : <http://www.optex-fa.com>

Photoelectric Sensor

Z4 SERIES

Z4T-2500□□ Z4D-100□□

Z4R-400□□ Z4D-L09□□



OPEX FA CO., LTD.

- Please confirm if specifications fulfill your needs.
- Please read this manual carefully before the use and keep this for future reference.

Safety Precautions

CAUTION

- It is dangerous to wire or attach/remove the connector with the power on.
- Installing in the following places may result in malfunction:
 1. A dusty or steamy place
 2. A place generating corrosive gas
 3. A place directly receiving scattering water or oil.
 4. A place suffered from heavy vibration or impact.
- The product is not designed for outdoor use.
- Do not use the sensor in transient state after power on (approx. 100 ms).
- Do not wire with the high voltage cable or the power line. Failure to do this will cause malfunction by induction or damage.
- The sensor performance may depend on the individual units or the condition of detected product.
- Do not use the product in water.
- Do not disassemble, repair, or convert the product. Failure to do this may cause failure, fire, or electric shock.
- Operate within the rated range.

This product cannot be used as a safety device to protect human body.

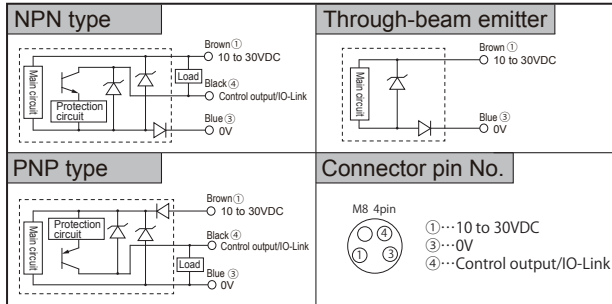
Specifications

	Through-beam	Retro-reflective	Diffuse-reflective	Limited diffuse reflective
Cable type	Z4T-2500(N/P)	Z4R-400(N/P)	Z4D-100(N/P)	Z4D-L09(N/P)
Connector type	Z4T-2500C(N4/P4)	Z4R-400C(N4/P4)	Z4D-100C(N4/P4)	Z4D-L09C(N4/P4)
Sensing distance*1	25m	0.01 to 4m	0 to 1m	10 to 90mm
Light Source	Red LED			
Spot size	φ 1800mm /25 m	φ 280mm /4 m	φ 75mm /1m	φ 8mm /90mm
Supply voltage	10 to 30VDC including ripple (P-P)10%			
Current consumption	Emitter: 14mA Max. Receiver: 20mA Max.		20mA Max.	
Response time	500μs Max.			
Hysteresis	—		20% Max.	10% Max.
Control output	NPN/PNP Open collector 100mA Max./30VDC Max.(Residual voltage 1.8V Max.)			
Output mode	Light ON, Dark ON selectable by switch			
Sensitivity adjustment	1-turn volume			
Indicators	Output indicator (orange LED), Stability indicator (green LED)			
Ambient temp. / humidity	-25 to 55°C /35 to 85%RH (No condensation or freezing)			
Storage temp. / humidity	-40 to 70°C /35 to 95%RH (No condensation or freezing)			
Ambient illuminance	Sunlight: 50,000 lx or less, Incandescent lamp: 5,000 lx or less			
Protection category/material	IP67 / Case : ABS, Front Cover : PMMA			

*1 Sensing distance showed in above table is typical value in each type.

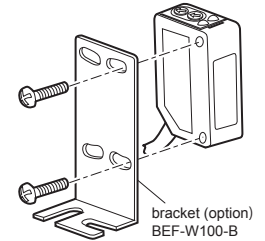
- Retro-reflective type: Reflector V-61 (Option)
- Diffuse-reflective type: White paper 200x200mm
- Limited diffuse reflective type: White paper 100x100mm

Input and output circuit diagram



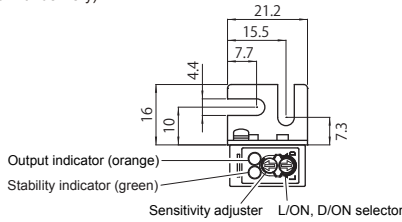
Attachment

- Tightening torque need to be under 0.5N·m.
- Use M3 screw to mount.(more than 7.5mm insert)

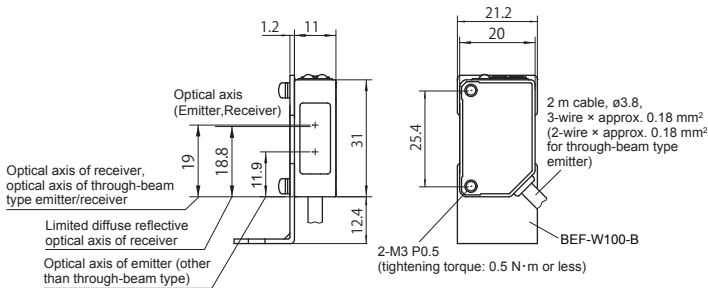


Dimensions

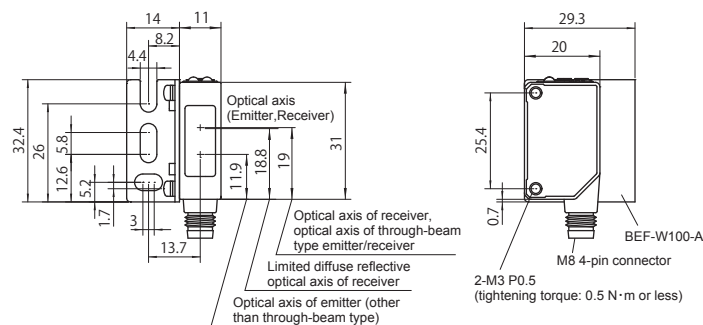
If mounting brackets are needed, order additionally.
(Not included with delivery)



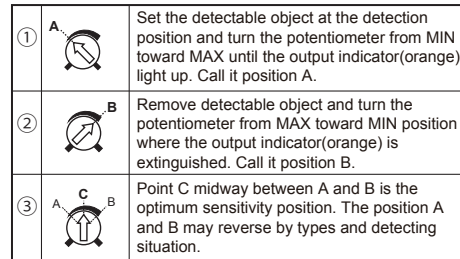
Cable type : When using brackets of BEF-W100-B (option)



Connector type : When using brackets of BEF-W100-A (option)



Adjusting the potentiometer



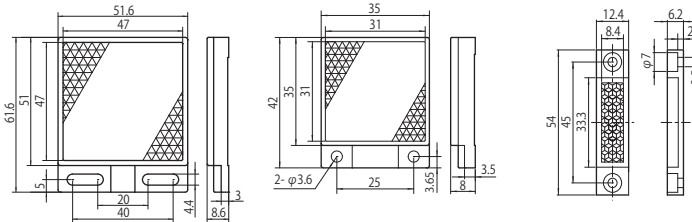
- Normally use the through-beam type and the retro-reflective type with the sensitivity adjustment potentiometer at the MAX position. If adjustment is necessary, do so according to the procedure on the left.
- Turn the potentiometer slowly. It may be damaged if turned with excessive force.

* The output indicator lighting (in orange) and turning off may be reversed depending on the output mode (light ON/dark ON).

Reflectors (option)

It is necessary for retro-reflective types.
Select the appropriate reflector according to the sensing distance and the installation conditions.
(Reflectors are optional and not included with delivery)

- Standard reflector model: V-61 Sensing distance: 0.01 to 4m
- Small reflector model: V-42 Sensing distance: 0.01 to 2.4m
- Vertical type reflector model: P45A Sensing distance: 0.01 to 1.4m



Stability indicator functions



Indicator status	Description
Lit continuously	Stable detection is being performed.
Lit for 0.1 seconds + off for 0.4 seconds	Indicates that detection is unstable. In detail, the indicator starts flashing when the detection margin drops below 10% and stops flashing when the detection margin meets or exceeds 10%.

⑩ → https://www.optex-fa.com/rohs_cn/

OPEX FA CO., LTD.

[Headquarters]

91 Chudoji-Awata-cho Shimogyo-ku Kyoto 600-8815 JAPAN

TEL +81-75-325-1314 FAX +81-75-325-2936

<https://www.optex-fa.com>

This device complies with part 15 of the FCC Rules.

Operation is subject to the following two conditions: (1) This device may not cause harmful interference, and (2) this device must accept any interference received, including interference that may cause undesired operation.

* This equipment has been tested and found to comply with the limits for a Class A digital device, pursuant to part 15 of the FCC Rules. These limits are designed to provide reasonable protection against harmful interference when the equipment is operated in a commercial environment. This equipment generates, uses, and can radiate radio frequency energy and, if not installed and used in accordance with the instruction manual, may cause harmful interference to radio communications. Operation of this equipment in a residential area is likely to cause harmful interference in which case the user will be required to correct the interference at his own expense.

Download the IO-Link index list and setting file (IODD file) from the Optex FA website.

<https://www.optex-fa.com>